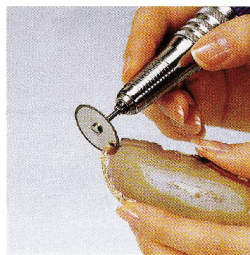
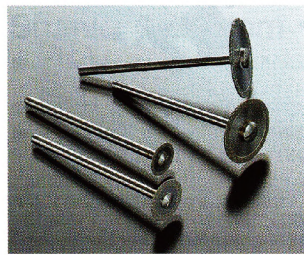
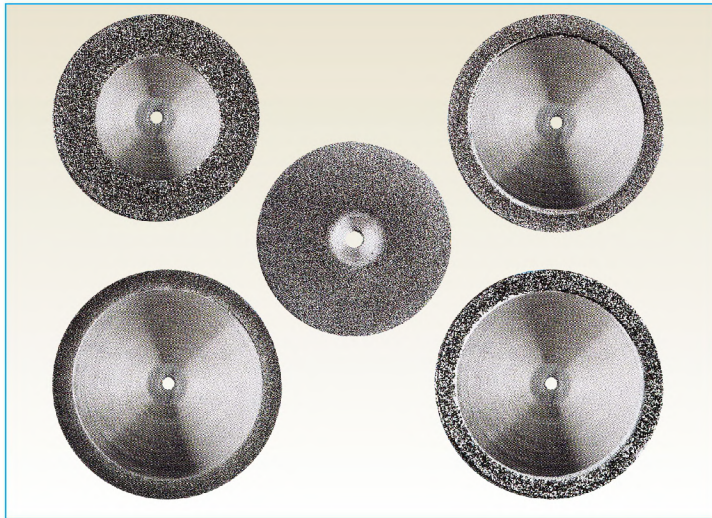


ESB-Series

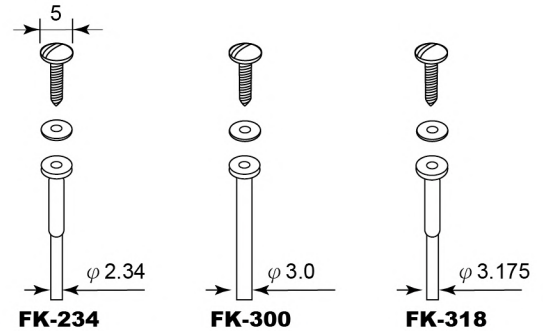
 $\varnothing 3$ 柄-鑽石電鍍超薄切片
 Diamond Electroplated Saw Blades


適用：

水晶, 玉石, 寶石等工藝品的加工及大理石, 瓷磚, 陶瓷, 結晶玻璃, 纖維油石等非鐵金屬之切割切邊加工。

It is suitable for crystal, glass, quartz, gemstone, stones, tile, ceramics, sper hard alloy, graphite, plastics and non-ferrous material

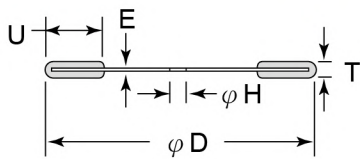
說明：
 Remark: $\frac{25}{D}$ $\frac{20}{E}$ $\frac{D}{\text{type}}$ $\frac{F}{\text{粒度(Grit)}}$



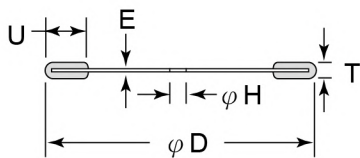
Unit:mm

TYPE-A

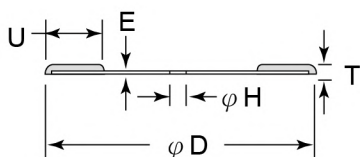
新品



TYPE-D



TYPE-C



型號 Model No.	外徑 $\varnothing D$	鑽石厚度 T	鑽石寬度 U	台金厚度 E	孔徑 H	鑽石粒度 Mesh	單價 Price
ESB-1620DF	16	0.4	2.0	0.2	1.7	● #200	
ESB-1920DF	19	0.4	2.0	0.2	1.7	● #200	
ESB-1920DJ	19	0.5	2.0	0.2	1.7	● #150	
ESB-2215AV	22	0.3	6.5	0.15	1.7	● #400	
ESB-2215DV	22	0.3	2.0	0.15	1.7	● #400	
ESB-2220AF	22	0.4	6.5	0.2	1.7	● #200	
ESB-2220DF	22	0.4	2.0	0.2	1.7	● #200	
ESB-2220CF	22	0.4	6.5	0.2	1.7	● #200	
ESB-2220AJ	22	0.5	6.5	0.2	1.7	● #150	
ESB-2220DJ	22	0.5	2.0	0.2	1.7	● #150	
ESB-2240AJ	22	0.7	6.5	0.4	1.7	● #150	
ESB-2520AF	25	0.4	8.0	0.2	1.7	● #200	
ESB-2520DF	25	0.4	2.0	0.2	1.7	● #200	
ESB-2520AJ	25	0.5	8.0	0.2	1.7	● #150	
ESB-2520DJ	25	0.5	2.0	0.2	1.7	● #150	
ESB-2540AJ	25	0.7	8.0	0.4	1.7	● #150	
ESB-2540AR	25	0.8	8.0	0.4	1.7	● #80	
ESB-2540DR	25	0.8	2.0	0.4	1.7	● #80	
ESB-3020DF	30	0.4	2.0	0.2	1.7	● #200	
ESB-3520DF	35	0.4	2.0	0.2	1.7	● #200	
ESB-4020DF	40	0.4	2.0	0.2	1.7	● #200	

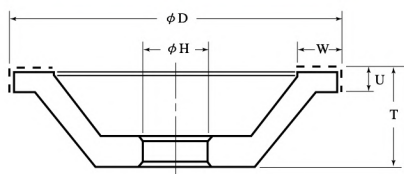


用途：利用電鍍法將磨料很堅固地鍍在台金的表面
 特色：1. 根據台金（鐵材）形狀，鍍上一層磨料的成形磨輪。
 2. 磨輪表面集中度高，誤差小形狀不易改變，可重複使用。

Designed to satisfy the basic needs of tool room grinding applications where a cost effective wheels is required for sharpening carbide tipped tools.

11C9

斜角碗型砂輪-Face Wheels



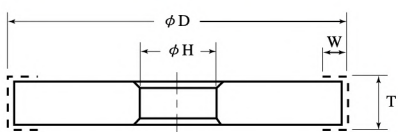
Unit:mm

型號 Model No.	外徑 φD	高度 T	面寬 W	孔徑 φH	刃高 U	鑽石粒度/Mesh Diamond					單價 Price
						#100	#150	#200	#400	#600	
WC-1005A22	100	22	10	20	5	●	●	●	●	●	
WC-1005A35	100	35	10	20	5	●	●	●	●	●	
WC-1605A35	100	35	16	20	5	●	●	●	●	●	
WC-2005A35	100	35	20	20	5	●	●	●	●	●	

適用鎢鋼刀具之研磨成型用
 Ideal for carbide tool's sharpening, forming and sharpening

1A1U

直型砂輪-Flat Wheels



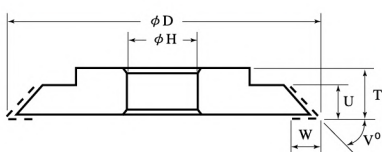
Unit:mm

型號 Model No.	外徑 φD	高度 T	面寬 W	孔徑 φH	鑽石粒度/Mesh Diamond			單價 Price
					#100	#200	#400	
WS-6105A3175	150	10	5	31.75	●	●	●	
WS-6105A1270	150	10	5	12.70	●	●	●	
WS-6105A1588	150	10	5	15.88	●	●	●	

1/2hp - Arbor Hole φ 15.88, 1/4hp - Arbor Hole φ 12.70
 適用鎢鋼刀具之研磨成型用 Ideal for carbide tool's sharpening

3Y1

斜型砂輪-Flat Taper Wheels



Unit:mm

型號 Model No.	外徑 φD	高度 T	面寬 W	孔徑 φH	刃高 U	角度 V°	鑽石粒度/Mesh Diamond			單價 Price
							#100	#200	#400	
WV-6645A1270	150	10	5	12.70	6	45	●	●	●	
WV-6645A1588	150	10	5	15.88	6	45	●	●	●	
WV-6660A1270	150	10	5	12.70	6	60	-	●	●	
WV-6660A1588	150	10	5	15.88	6	60	-	●	●	

1/2hp - Arbor Hole φ 15.88, 1/4hp - Arbor Hole φ 12.70
 適用鎢鋼刀具之研磨成型用 Ideal for carbide tool's sharpening



用途：可用於鎢鋼刀切削，自動CNC磨刀機

特色：樹脂砂輪是利用酚樹脂系列與超級磨料混合，加壓加熱製造而成。富彈性且切削能力佳，研削表面粗度優良。

Our wheels are made using the highest quality superabrasive and raw materials to ensure superior performance.

訂購砂輪時，請指明下列事項：

1. 砂輪之形狀及各部尺寸：參考下一頁
2. 磨料種類：鑽石或氮化硼
3. 粒度：例如：#150
4. 集中度：例如：C-75
5. 結合劑：例如：樹脂結合
6. 冷卻方式：乾磨或濕磨，乾濕皆有。
7. 數量及交期：
8. 轉速及加工條件：
9. 大多數製造商都會在砂輪上刻字如下，請告知以供參考。

When ordering , please specify :

1. Shape & dimensions of wheel :
Please refer to next page.
2. Kind of abrasive : Diamond or CBN?
3. Grit size : Ex : #150
4. Concentration : Ex : C-75
5. Bond of wheel : Ex : Resin bonded.
6. Coolant : Dry vs. Wet grinding or both grinding.
7. Quantity & delivery :
8. Spindle speed & grinding conditions :
9. Most of makers marked their wheels as below, please show that to us for reference.

SDC 磨料種類 Kind of abrasive	150 粒度 Grit size	N 結合度 Grade	75 集中度 Concentration	R 結合劑 Bond	3.0 磨料層厚度 Rim thickness
D: 天然鑽石 Natural diamond	例如 / Ex. #60	J 軟 / Soft	25	R: 樹脂結合 Resin bond	1.0mm
SD: 人造鑽石 Synthetic diamond	#80	L	50		1.5mm
SDC: 人造金屬披覆鑽石 Synthetic metal coating diamond	#100	N	75	M: 金屬結合 Metal bond	2.0mm
B: 氮化硼(CBN) Cubic boron nitride (CBN)	#150	P	100		3.0mm
BC: 金屬披覆氮化硼(CBN) (CBN) with metal coating	#200	R 硬 / Hard	125	P: 電鑄法 Electroplated	4.0mm
	#270		150		5.0mm
	#325				
	#400				

鑽石磨料適合加工之材料
Diamond Type (Non-ferrous Materials)

- 碳化鎢
- 陶瓷，耐火材料
- 氧化鐵
- 玻璃，石英
- 石材，寶石
- 碳，石墨及其製品
- 塑膠，玻璃纖維
- Tungsten carbide
- Ceramic, Refractory
- Ferric Oxide
- Glass, Quartz
- Stones, Gem Stones
- Carbide, Graphite
- Plastic, Graphite

氮化硼磨料適合加工之材料
CBN Type (Ferrous Materials)

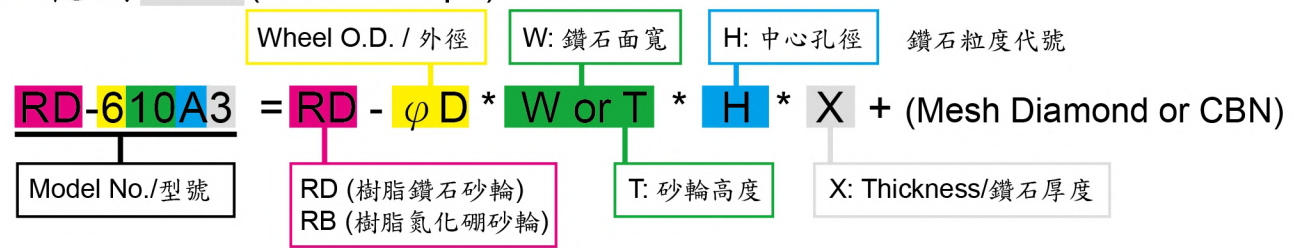
- 合金鋼
- 不鏽鋼
- 鑄鐵
- 模具鋼
- 耐熱鋼材
- 高速鋼，工具鋼
- High Alloy Steels
- Stainless Steels
- Casting Iron
- Die Steel
- Heat-resisting Steels
- High-speed Tool Steels

The standard diamond & CBN types offered by Rex-Lee are listed below, other sizes are available upon request.

Straight Wheels 直型砂輪	Face Wheels 碟型砂輪	Cup Wheels 碗型砂輪	Form Wheels 成型砂輪
1A1R 	4A2 	6A9 	1FF1
1A1 	6A2 	11B2 	1L1
3A1 	9A3 	11C9 	1EE1
14A1 	11A2 	11V9 	1V1
14U1 	12A2 	12B2 	Note: Special sizes available upon request.

砂輪訂製方法	How to order a wheel
<ol style="list-style-type: none"> 若是重複訂製，請告知工作單編號即可。 若需我們為您設計砂輪，則請告知： <ol style="list-style-type: none"> 工件名稱，材質，硬度。 機器名稱，型式，轉速及馬力。 加工條件及加工精度 若自行設計砂輪，則告知如下例： 14A1, 350D-10U-5X-25T-250J-127H, SDC 150N75R5.0, 乾磨/濕磨 	<ol style="list-style-type: none"> For repeated order, Just tell us the manufacturing number. If you require us to design the wheels for you, please specify: <ol style="list-style-type: none"> Workpiece material, hardness. Machine condition, travel speed & available power. Grinding conditions & contact area. If you have your own design, please order as below: 14A1, 350D-10U-5X-25T-250J-127H, SDC 150N75R5.0, Dry/Wet grinding

Ex. 範例 1A1 (Wheel Shape)

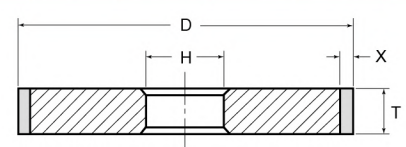


外徑D(序號) / 中心孔徑H(序碼)對照表:

φD/外徑	50	80	100	125	152	175	200	300	350	400	450	500		
No./序號	2	3	4	5	6	7	8	12	14	16	18	20		
H/中心孔徑	12.7	15	15.88	16	17	19	19.05	20	22.23	24	25	31.75	101.6	127
Code/序碼	B	C	D	E	F	G	H	I	J	K	L	A	M	N

1A1

直型砂輪 Straight Wheels



適用於平面磨床, 研磨鎢鋼, 陶瓷(選用鑽石-SDC) 硬化鋼材(選用氮化硼B)

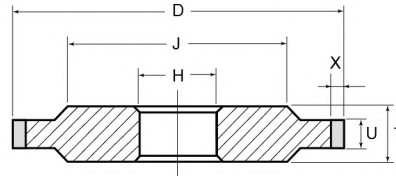
Unit:mm

型號 Model No.	外徑 φD	高度 T	孔徑 φH	厚度 X	鑽石粒度/Mesh Diamond				單價 Price
					#100	#150	#200	#400	
RD-610A3	150	10	31.75	3	●	-	●	●	
RB-610A3	150	10	31.75	3	●	-	●	●	
RD-610A5	150	10	31.75	5	●	-	●	●	
RB-610A5	150	10	31.75	5	●	-	●	●	
RD-613A3	150	13	31.75	3	-	-	●	-	
RB-613A3	150	13	31.75	3	-	-	●	-	
RD-613A5	150	13	31.75	5	-	-	●	-	
RB-613A5	150	13	31.75	5	-	-	●	-	
RD-710A3	175	10	31.75	3	-	-	●	-	
RB-710A3	175	10	31.75	3	-	-	●	-	
RD-710A5	175	10	31.75	5	-	-	●	-	
RB-710A5	175	10	31.75	5	-	-	●	-	
RD-713A3	175	13	31.75	3	-	-	●	-	
RB-713A3	175	13	31.75	3	-	-	●	-	
RD-713A5	175	13	31.75	5	-	-	●	-	
RB-713A5	175	13	31.75	5	-	-	●	-	
RD-810A3	200	10	31.75	3	-	-	●	-	
RB-810A3	200	10	31.75	3	-	-	●	-	
RD-810A5	200	10	31.75	5	-	-	●	-	
RB-810A5	200	10	31.75	5	-	-	●	-	
RD-813A3	200	13	31.75	3	-	-	●	-	
RB-813A3	200	13	31.75	3	-	-	●	-	
RD-813A5	200	13	31.75	5	-	-	●	-	
RB-813A5	200	13	31.75	5	-	-	●	-	

* RD-(Diamond) used for carbide, RB-(CBN) for hardened steels

14A1

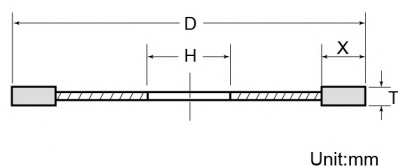
直型砂輪-Straight Wheels



Unit:mm

型號 Model No.	外徑 φ D	高度 T	面寬 U	孔徑 φ H	厚度 X	鑽石粒度/Mesh Diamond				單價 Price
						#100	#150	#200	#400	
RD-202A3	50	10	2	25	3	-	-	●	-	
RB-202A3	50	10	2	25	3	-	-	●	-	
RD-203A3	50	10	3	25	3	-	-	●	-	
RB-203A3	50	10	3	25	3	-	-	●	-	
RD-303A5	80	10	3	31.75	5	-	-	●	-	
RB-303A5	80	10	3	31.75	5	-	-	●	-	
RD-601A3	150	10	1	31.75	3	-	-	●	-	
RD-602A3	150	10	2	31.75	3	-	-	●	-	
RD-603A3	150	10	3	31.75	3	●	-	●	●	
RD-603A5	150	10	3	31.75	5	-	-	●	-	
RB-601A3	150	10	1	31.75	3	-	-	●	-	
RB-602A3	150	10	2	31.75	3	-	-	●	-	
RB-603A3	150	10	3	31.75	3	●	-	●	●	
RB-603A5	150	10	3	31.75	5	-	-	●	-	
RD-606A3	150	10	6	31.75	3	●	-	●	●	
RB-606A3	150	10	6	31.75	3	●	-	●	●	
RD-606A5	150	10	6	31.75	5	-	-	●	-	
RB-606A5	150	10	6	31.75	5	-	-	●	-	
RD-608A3	150	10	8	31.75	3	-	-	●	●	
RB-608A3	150	10	8	31.75	3	-	-	●	-	
RD-608A5	150	10	8	31.75	5	-	-	●	-	
RB-608A5	150	10	8	31.75	5	-	-	●	-	
RD-703A5	175	10	3	31.75	5	-	-	●	-	
RB-703A5	175	10	3	31.75	5	-	-	●	-	
RD-706A3	175	10	6	31.75	3	-	-	●	●	
RB-706A3	175	10	6	31.75	3	-	-	●	-	
RD-706A5	175	10	6	31.75	5	-	-	●	-	
RB-706A5	175	10	6	31.75	5	-	-	●	-	
RD-708A3	175	10	8	31.75	3	-	-	●	-	
RB-708A3	175	10	8	31.75	3	-	-	●	-	
RD-708A5	175	10	8	31.75	5	-	-	●	-	
RB-708A5	175	10	8	31.75	5	-	-	●	-	
RD-7015A3	175	10	1.5	31.75	3	-	-	●	-	
RD-7020A3	175	10	2	31.75	3	-	-	●	-	
RD-7030A3	175	10	3	31.75	3	-	-	●	-	
RB-7015A3	175	10	1.5	31.75	3	-	-	●	-	
RB-7020A3	175	10	2	31.75	3	-	-	●	-	
RB-7030A3	175	10	3	31.75	3	-	-	●	-	
RD-1210M5	300	30	10	101.6	5	-	-	●	-	
RB-1410N5	350	32	10	127	5	-	●	●	-	
RB-1415N5	350	32	15	127	5	-	●	●	-	
RB-1415N10	350	32	15	127	10	-	●	●	-	
RB-1420N5	350	32	20	127	5	-	●	●	-	
RD-1615N5	400	32	15	127	5	-	-	●	-	
RD-1815-5	450	38	15	-	5	-	-	●	-	
RD-2015-5	500	38	15	-	5	-	-	●	-	

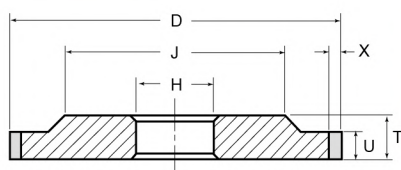
樹脂鑽石/氮化硼砂輪 Resinoid Diamond & CBN Wheels

1A1R
 樹脂切斷砂輪
 Cutting Wheels


Unit:mm

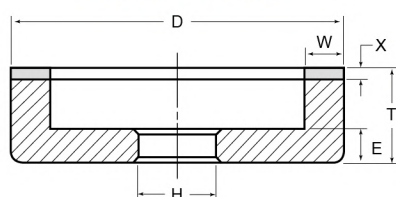
型號 Model No.	外徑 φD	高度 T	孔徑 φH	厚度 X	鑽石粒度/Mesh		單價 Price
					#120		
RD-601B7	152	1	19.05	7	●		
RD-601A6	152	1	31.75	7	●		
RD-601A7	152	1	31.75	7	●		

適用於平面磨床 (31.75孔) 或沖頭切斷機 (19.05孔)
 研磨, 切斷鎢鋼, 陶瓷 (選用鑽石-SDC) 或硬化鋼材 (選用氮化硼B)
 Ideal for sharpening carbide, general carbide cutting

3A1
 直型砂輪
 Straight Wheels


型號 Model No.	外徑 φD	高度 T	孔徑 φH	厚度 X	鑽石粒度/Mesh		單價 Price
					#200		
RD-3005C3	80	0.5	22.22	3	●		
RD-3005B3	80	0.5	24	3	●		
RD-3007C3	80	0.7	22.22	3	●		
RD-3007B3	80	0.7	24	3	●		
RD-4015A5	100	1.5	31.75	5	●		
RD-4020A5	100	2.0	31.75	5	●		
RD-4025A5	100	2.5	31.75	5	●		
RD-4030A5	100	3.0	31.75	5	●		
RD-4035A5	100	3.5	31.75	5	●		
RD-406A5	100	6	31.75	5	●		

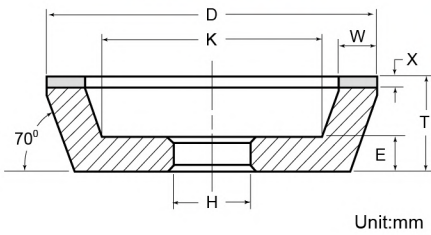
適用於平面磨床 (31.75孔) 或沖頭切斷機 (19.05孔)
 研磨, 切斷鎢鋼, 陶瓷 (選用鑽石-SDC), 或硬化鋼材 (選用氮化硼B)
 (RD-xxxx): Size/flatness - carbide parts

6A2
 直角碗型砂輪
 Face Wheels


型號 Model No.	外徑 φD	高度 T	面寬 W	孔徑 φH	厚度 X	鑽石粒度/Mesh			單價 Price
						#150	#200	#400	
RB-206D2	50	12.4	6	15.88	2	-	●	●	
RD-206D2	50	12.4	6	15.88	2	-	●	-	
RB-206F2	50	11	6	17	2	●	-	-	
RD-205K5	50	20	5	24	5	-	●	-	
RB-207C5	50	20	7	15	5	-	●	-	
RB-207G5	50	20	7	19	5	-	●	-	

11A2

斜角碗型砂輪
Face Wheels

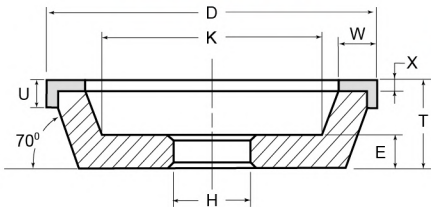


型號 Model No.	外徑 φD	高度 T	面寬 W	孔徑 φH	厚度 X	鑽石粒度/Mesh			單價 Price
						#150	#200	#400	
RD-0408A2	100	40	8	20	2	●	●	●	
RD-0410A3	100	30	10	20	3	-	●	●	

適用於工具磨床，鎢鋼刀具研磨及成型
Apply on tool grinding machine to grinding and forming the carbide tools

11C9

斜角碗型砂輪
Face Wheels

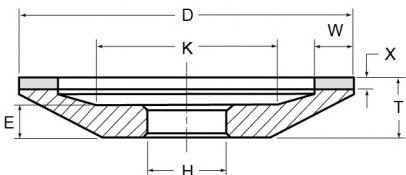


型號 Model No.	外徑 φD	高度 T	面寬 W	孔徑 φH	厚度 X	刃高 U	鑽石粒度/Mesh			單價 Price
							#150	#200	#400	
RD-408I15	100	40	8	20	1.5	5	●	●	●	

適用鎢鋼工具之研磨，成型用
Apply on tool grinding machine to grinding and forming the carbide tools

12A2

碟型砂輪
Cup Wheels

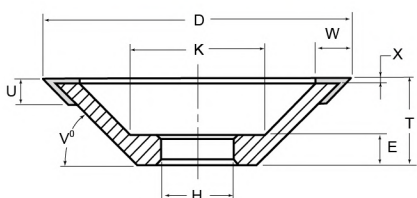


型號 Model No.	外徑 φD	高度 T	面寬 W	孔徑 φH	厚度 X	鑽石粒度/Mesh				單價 Price
						#200	#400	#500	#600	
RD-508L15	125	16	8	25	1.5	●	●	-	●	
RD-610E1	150	15	10	16	1	-	●	-	-	
RD-610E2	150	15	10	16	2	-	●	-	-	
RD-608E1	150	15	8	16	1	-	●	●	-	
RD-608E2	150	15	8	16	2	-	●	●	-	
RD-606E1	150	15	6	16	1	-	●	-	-	
RD-606E2	150	15	6	16	2	-	●	-	-	

- 適用於工具磨床，鎢鋼刀具研磨與成型。
- 鎢鋼、陶瓷選用型號RD-****，硬化鋼材選用型號RB-****
*RD-(Diamond) used for carbide, RB-(CBN) for hardened steels

12Y9C

碗型砂輪
Face Wheels



型號 Model No.	外徑 φD	寬度 W	厚度 X	孔徑 φH	高度 U	角度 V°	鑽石粒度/Mesh			單價 Price
							#200	#400	#600	
RD-508L15V45	125	8	1.5	25	5	45	●	●	●	
RD-508L15V60	125	8	1.5	25	5	60	●	●	●	
RD-508L15V90	125	8	1.5	25	5	90	●	●	●	

適用於自動車床刀具研磨機，鎢鋼車刀研磨
For tool grinding machine to sharpen the carbide turning tools.